

EL-WiFi-VAC2

Dual Channel WiFi Vaccine Monitoring Kit



- Dual channel WiFi datalogger with two external thermistor probes in glycol bottles to mimic vaccines
- Temperature measurement range -40 to +60°C (-40 to +140°F)
- Wirelessly stream and view temperature data on the EasyLog Cloud, App or on a PC
- Easy sensor set-up using free PC software application
- Configurable high and low alarms with indicator
- Sensor memory stores all data even if WiFi is temporarily disconnected
- Calibration certificate supplied at 2 and 8°C

The EL-WiFi-VAC2 measures the temperatures of two probes sunk into glycol bottles, designed to mimic vaccine samples. The probes are connected to the logger via a 160mm Y splitter cable which is provided. Data from the probes is streamed wirelessly over any compatible WiFi network and can be viewed on a PC using free software or on the EasyLog Cloud or App.



To configure the sensor for use on a given wireless network, either connect it via USB to a PC running EasyLog WiFi software on the network, or configure wirelessly using the EasyLog Cloud app on a mobile phone with access to the network. The sensor can then be placed anywhere within range of the network. In a typical usage scenario, the probes are placed next to the vaccines within a fridge, and the ribbon cables fed out to the logger attached to the outside of the fridge using its magnetised wall bracket; the cables are deliberately thin so as not to interfere with the fridge seal. If the sensor temporarily loses connectivity with the network, it will log readings until it is able to communicate again with the PC application or EasyLog Cloud (max 30 days at 10 second sample interval).

The sensor is IEEE 802.11bgn* (2.4GHz) compliant, supports WEP, WPA/WPA2 encryption and enterprise networks (PEAP, TTLS, FAST).

The logger unit has a protection rating of IP42 and the probe IP67. The unit is freestanding, but can be attached to a wall or surface using the bracket provided. The unit can be clipped in and out of the bracket as required.

SPECIFICATIONS

	Minimum	Typical	Maximum	Unit
Battery life		>6		Months
USB supply voltage (@500mA)	4.5	5.0	5.5	Vdc
Operating temperature range	-20 (-4)		+60 (+140)	°C (°F)
Logging period (user configurable)	10 sec	10 min	12 hrs	
Transmission period (user configurable)	1 min	1 hr	24 hrs	
Temperature measurement range	-40 (-40)		+60 (+140)	°C (°F)
Temperature measurement resolution		0.01 / 0.02		°C/°F
Temperature display resolution		0.01		
Temperature tolerance		±0.1°C / ±0.2°F (-10 to +60°C/ +14 to +140°F)		°C/°F
IP Rating	Logger IP42, Probe Tip IP67 (Bung fully inserted, not permanently powered, probe connector fitted and fully inserted, device mounted vertically.)			
Dimensions	82 x 70 x 23mm (3.22 x 2.75 x 0.91)**			

- * MAC Address starting 98:8B:AD:2..... only
** Excluding probe and mounting bracket



ACCESSORIES

EL-P-VAC	Replacement thermistor glycol probe
PSU-5VDC-USB-USA	USB mains power adapter for USA
PSU USB-UK	USB mains power adapter for UK
PSU USB-EU	USB mains power adapter for EU
EL-WiFi-Alert	Audible and visual alarm unit

INCLUDED IN THE BOX

EL-WIFI WALL BRACKET	Wall mounting bracket for EL-WiFi sensors
2x EL-P-VAC	External Thermistor Glycol Probes, 3m cable
CABLE USB A-MICRO B	USB Type A to Micro B
CAL-TEMP-UK	Temperature Calibration certificate

Authorised Distributor
DL TECHNOLOGY PTE LTD

Tel: +65 6592 5006 Email: info@dl-tec.com Web: www.dl-tec.com

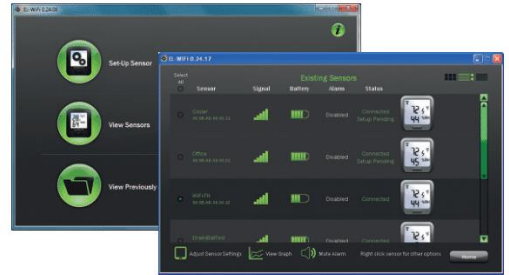
EL-WiFi-VAC2

Dual Channel WiFi Vaccine Monitoring Kit



EL-WiFi-WIN

Lascar's WiFi software* is available as a free download from: www.lascarelectronics.com/software/easylog-wifi. Easy to install and use, EL-WiFi-WIN allows easy connection of sensors to a WiFi network. The user can select where data is stored - the PC or the Cloud.



EasyLog Cloud Your Data. Anytime. Anywhere.

EasyLog Cloud harnesses the power of IoT to automate data logging and alert notifications, enabling you to monitor and manage multiple data logging devices in different locations completely remotely. The system easily scales to meet your needs. Perfect for compact systems with just a few measuring points, or corporate solutions with thousands of devices around the globe.

You will need to create an account at www.easylogcloud.com before setting up your cloud-connected data logger.



Features at a glance*



Store your data logging records securely on the Cloud



Connect multiple users with variable account privileges



Connect data loggers from multiple sites in a single account



Easily access your most important data, anywhere



Remotely manage all of your data logging devices



Never miss a critical event with flexible advanced notifications



Review and analyse your data with powerful graphing functionality



Keep track of data events and system activity with a detailed event log

*Features depend on account type.

Battery Life and Power Supply

The battery can be recharged (unit must be between 0 - 40°C) via a PC, a USB +5V wall adapter, or a portable USB battery pack using the USB lead provided. It can also be permanently powered by a USB wall adapter or USB battery pack. Readings may be affected while the internal battery is being charged. However, once charged, continued connection of the charger will have no effect.

Battery life is dependent on: transmission period, WiFi encryption method, WiFi encryption key rotation frequency (determined by the router/access point), signal strength between router/access point and WiFi device, presence volume and type of WiFi traffic from other devices, sample rate and operating temperature.

Specifications liable to change without prior warning

*Requires Windows 7, 8.1, 10

Authorised Distributor
DL TECHNOLOGY PTE LTD

Tel: +65 6592 5006 Email: info@dl-tec.com Web: www.dl-tec.com