

# EL-USB-1-RCG

## Temperature Data Logger with Rechargeable Battery



- -20 to +60°C (-4 to +140°F) measurement range
- Stores over 32,000 readings
- EasyLog software available as a free download
- Stainless steel (316 grade) case
- Rechargeable Lithium-Ion battery
- Logging rates between 1 second and 12 hours
- Immediate and delayed logging start
- User-programmable alarm thresholds
- Red & green status LEDs behind protective glass window
- Environmental protection to IP67
- Supplied with Type A-Mini B USB cable



This standalone data logger measures and stores more than 32,000 temperature readings over a -20 to +60°C (-4 to +140°F) range with a resolution of 0.1°C (0.2°F).

The polycarbonate window and stainless steel 316 assembly provides protection from corrosion, impact and water ingress to IP67/NEMA 4X.

The user can easily set up the logger and view downloaded data by connecting the data logger to a PC's USB port and using the free EasyLog software. Data can then be graphed, printed and exported to other applications for detailed analysis.

The data logger is powered by a Lithium-Ion battery which can typically allow for logging for up to 1 month.

### SPECIFICATIONS

<b>Measurement range</b>	-20 to +60°C (-4 to +140°F)
<b>Internal resolution</b>	0.1°C (0.2°F)
<b>Accuracy (overall error)</b>	±1°C (±2°F)
<b>Logging rate</b>	User selectable between 1 second & 12 hours
<b>Operating temperature range</b>	-20 to +60°C (-4 to +140°F)
<b>Battery Life</b>	4 weeks (at 20°C and 1 minute logging rate)
<b>Recharging time</b>	5 hours
<b>Charging temperature range</b>	+10 to +30°C (+50 to +86°F)
<b>Readings</b>	32,510
<b>Dimensions</b>	93 x 20mm (3.66 x 0.78")

### INCLUDED IN THE BOX

**CABLE USB A-MF** Type A - Mini B USB Cable

Authorised Distributor

**DL TECHNOLOGY PTE LTD**

Tel: +65 6592 5006 Email: [info@dl-tec.com](mailto:info@dl-tec.com) Web: [www.dl-tec.com](http://www.dl-tec.com)

# EL-USB-1-RCG

## Temperature Data Logger with Rechargeable Battery



### LED STATUS INDICATION

EL-USB-1-RCG features two LEDs:

- The first LED flashes **red** to indicate that the EL-USB-1-RCG is in an alarm condition. It will flash when the logged temperature has exceeded a Low or High alarm level.
- The second LED flashes **green** to indicate that the EL-USB-1-RCG is not in an alarm condition.

Using EL-WIN-USB it is possible to set the alarm to remain active even if the reading has returned to normal, in which case the alarm LED will continue to flash red. This 'Hold' feature in the software ensures the user is notified that at some point an alarm level has been exceeded, without needing to download the data.

Hold is enabled by default, and can be turned off via the control software. The red LED will then only flash whilst the logger is in an alarm condition. When the temperature returns to normal, the green LED will flash.

	<b>Green single flash (every 30 seconds)</b> The data logger is not currently logging, but is primed to start at a later date and time (delayed start)
	<b>Green single flash (every 10 seconds)</b> The data logger is currently logging. No alarm
	<b>Red single flash (every 10 seconds)</b> The data logger is currently logging. Low alarm
	<b>Red double flash (every 10 seconds)</b> The data logger is currently logging. High alarm
	<b>Green single flash (every 20 seconds)</b> The data logger is currently logging. Low battery
	<b>Red single flash (every 20 seconds)</b> The data logger is currently logging, however the battery is running low. Low alarm
	<b>Red double flash (every 20 seconds)</b> The data logger is currently logging, however the battery is running low. High alarm
	<b>Green double flash (every 20 seconds)</b> The data logger is full and has stopped logging
	<b>Red &amp; Green single flash alternately (every 20 seconds)</b> The data logger is full and has stopped logging. High or low alarm
	<b>No LEDs flash</b> The data logger is stopped, the battery is empty or there is no battery

Authorised Distributor

**DL TECHNOLOGY PTE LTD**

Tel: +65 6592 5006 Email: [info@dl-tec.com](mailto:info@dl-tec.com) Web: [www.dl-tec.com](http://www.dl-tec.com)

# EL-USB-1-RCG

## Temperature Data Logger with Rechargeable Battery

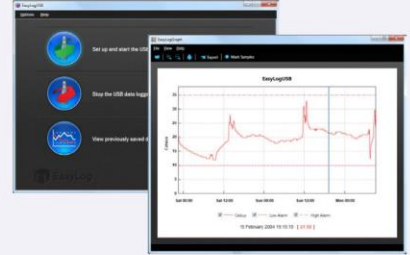


### EL-WIN-USB

Lascar's EasyLog control software is available as a free download from [www.easylogusb.com](http://www.easylogusb.com). Easy to install and use, the control software is compatible with 32-bit and 64-bit versions of Windows 7, 8 & 10. The software is used to set up the logger, download, graph and annotate data or export in Excel, PDF and jpeg formats.

The software allows the following parameters to be configured:

- Logger name
- Measurement parameter (°C or °F)
- Logging rate (user selectable between 1 second and 12 hours)
- High and low alarms
- Immediate and delayed logging start



Download the latest version of the software free of charge from [www.easylogusb.com](http://www.easylogusb.com)

### BATTERY INFORMATION

The EL-USB-1-RCG is fitted with a 280mAh capacity (nominal) rechargeable Lithium-Ion battery. The logger must be connected to an active USB port to recharge the battery; this may take up to 5 hours, depending on the level of discharge. The battery charge status is indicated by the status LEDs. The red LED indicates that charging is ongoing; the green LED indicates that the battery is fully charged. The fully charged capacity of the rechargeable battery will reduce over time. The battery operates best at temperatures of +10 to +30°C (+50 to +86°F). Recharging should only be performed within this temperature range.

Authorised Distributor  
**DL TECHNOLOGY PTE LTD**

Tel: +65 6592 5006 Email: [info@dl-tec.com](mailto:info@dl-tec.com) Web: [www.dl-tec.com](http://www.dl-tec.com)